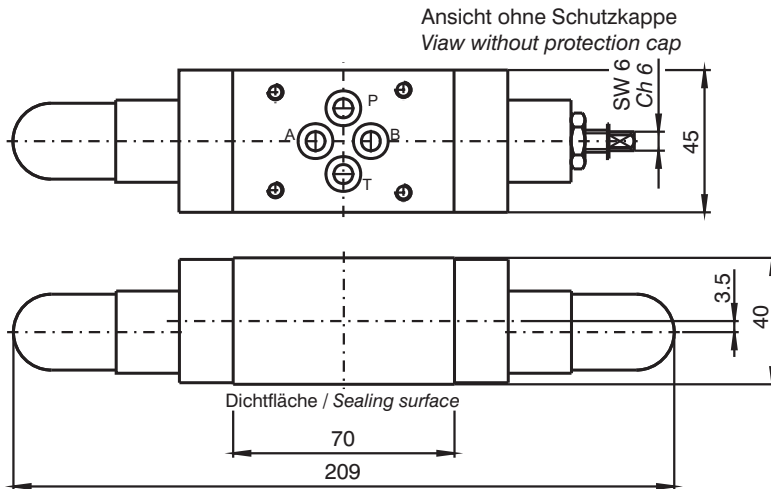


Schockventile, vorgesteuert ZN 6 DBS - * - AB

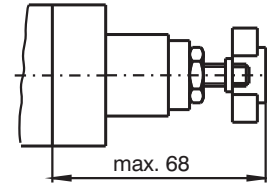
Shock valve, pilot operated ZN 6 DBS - * - AB

Abmessungen / Dimensions

Zur Absicherung gegen Schockwirkung (bei plötzlichen Bremsvorgängen), speziell für Hydro-Motoren
 Specially for protection of hydro motors (for suddenly brake - stops)



Ausführung "H" mit Handrad
 Design "H" with hand wheel

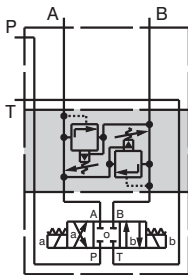


Max. Betriebsdruck 350 bar
 Max. working pressure 350 bar

Masse : ca. 1,4 kg
 Weight : approx. 1,4 kg

Anwendungsbeispiele / Examples of application

ZN6 DBS * - AB

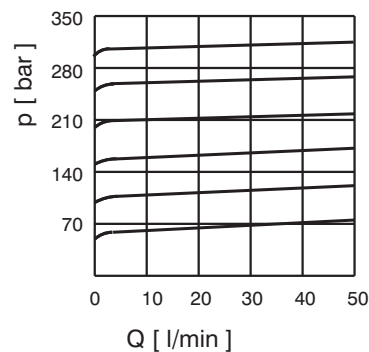


Druckbereiche / Pressure ranges:

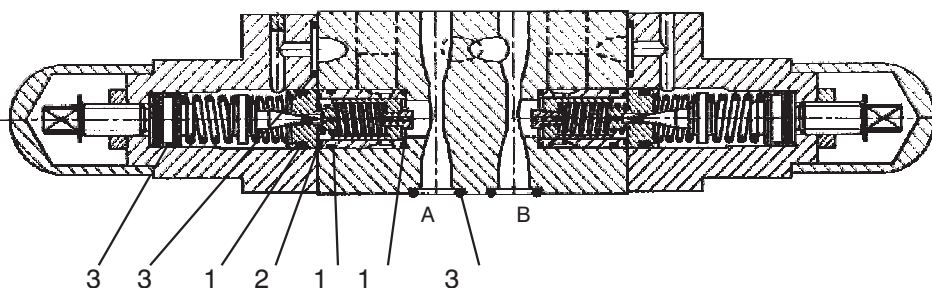
- 100 = 5 - 100 bar
- 210 = 5 - 210 bar
- 350 = 5 - 350 bar

Kennlinien / Performance Curves

Werte ermittelt bei Ölviskosität 24 cSt,
 Öltemperatur 50°C
 Values determined at oil viscosity 24 cSt,
 oil temperature 50°C



Schnittzeichnung mit Dichtsatz / Sectional drawing with seal kit



Pos. Item	Stück No.	Benennung Designation
1	6	O-Ring / o-ring OR 2-014 (12,42 x 1,78) NBR 70 Shore
2	2	O-Ring / o-ring OR 2-013 (10,82 x 1,78) NBR 90 Shore
3	8	O-Ring / o-ring OR 5-612 (8,74 x 1,78) NBR 90 Shore